
Linking CCAP Administrative Data Across Multiple States

Alejandra Ros Pilarz

University of Wisconsin-Madison

Child Care Policy Research Consortium
Annual Meeting

December 3, 2015



Outline

1. IL/NY Child Care Research Partnership
2. Potential challenges
3. Potential benefits
4. Summary of opportunities/challenges

IL/NY Child Care Research Partnership

- Partnership with Univ. of Chicago & Urban Institute & State Child Care Administrators
 - PI: Julia Henly; Co-PIs: Heather Sandstrom & Amy Claessens
 - Funded by OPRE/ACF, Grants #90YE0133 & #90YE0151-01-00
- To gain knowledge about child care subsidy dynamics and factors associated with subsidy (in)stability and its implications for child care quality and continuity
- 4 Targeted Regions
 - New York – Nassau and Westchester Counties
 - Illinois – Cook County and Southwestern IL
- Non-school aged new entrants in subsidy program
- Multi-component, mixed-method study, including admin. records over 18 months in 4 regions



Potential Challenges

Potential Challenges

Level of the records across states

- How do states collect and store the data?
- e.g., family vs. child
- Implications for:
 - making comparisons across states
 - research questions

Potential Challenges

Type of information

- Differences in state definitions of variables, in what is collected, and in reliability/validity.
- e.g., type of care
- Useful to consult with program administrators
- Recommend analyzing data from each state separately

Potential Challenges

Time Unit

- Weekly vs. Monthly Records
- Example from MN/MD Child Care Research Partnership (Liz Davis)

Spells with the same number of weeks may include a different number of months

	Month 1				Month 2					Month 3					Month 4							
CASE NUM	Week 1	Week 2	Week 3	Week 4	Week 5	Week 6	Week 7	Week 8	Week 9	Week 10	Week 11	Week 12	Week 13	Week 14	Week 15	Week 16	Week 17	Week 18	Week 19	# Weeks	# Months	
1	X	X	X	X																	4	1
2				X	X	X	X														4	2
3										X	X	X	X	X	X	X					7	3
4													X	X	X	X	X	X	X		7	2

*Krafft, C., Davis, E.E., & Forry, N.D. (Dec. 2014). Continuity of child care subsidy receipt: Why definitions of spells and gaps matter. Technical Brief. http://www.childtrends.org/wp-content/uploads/2015/02/2014-55MDTechnical_Brief.pdf

Potential Challenges

Interpreting results

- Inadequate control of contexts
 - state economy
 - influence of other state programs, e.g., TANF
- Programs vary in many ways
 - caseload composition
- Important to understand local context and also examine within state differences

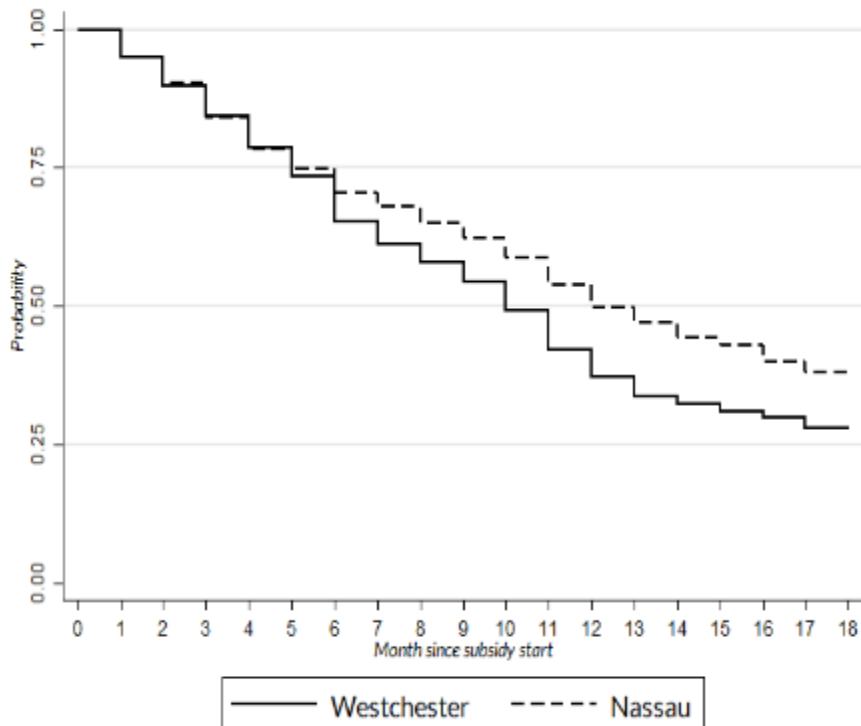
Potential Benefits

Benefits to using data from multiple states

- Administrative data is useful for comparing longitudinal patterns in program use
 - How do patterns of subsidy use vary across states?
 - How does the continuity of subsidized care arrangements vary across states?
 - How do caseload compositions vary across states?
- Advantages/Disadvantages

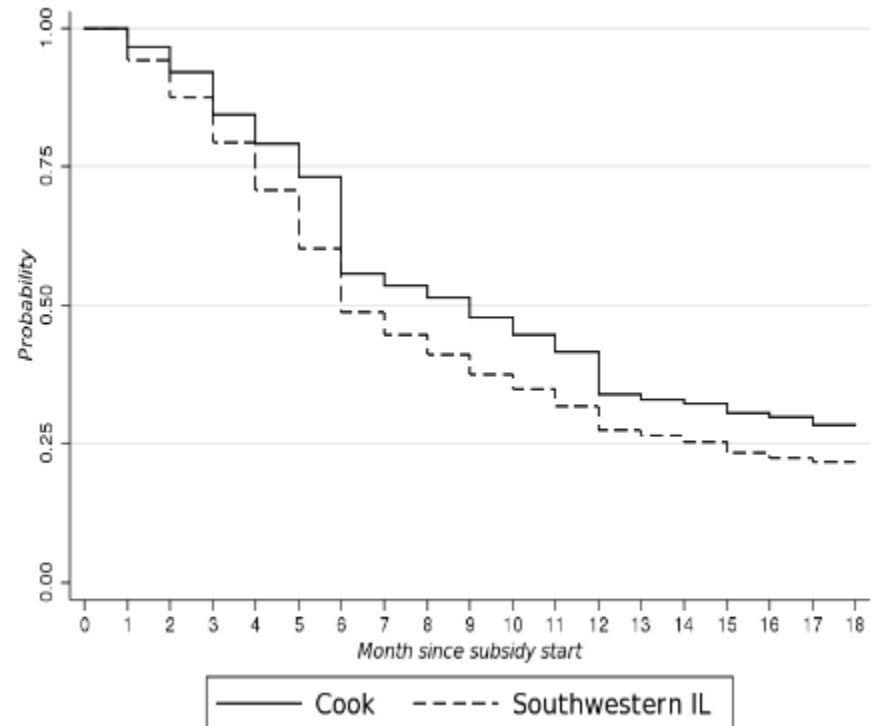
Kaplan-Meier Survival Curve of First Subsidy Spell, 18-month window

- New York



Median spell
Nassau: 12 months
Westchester: 10 months

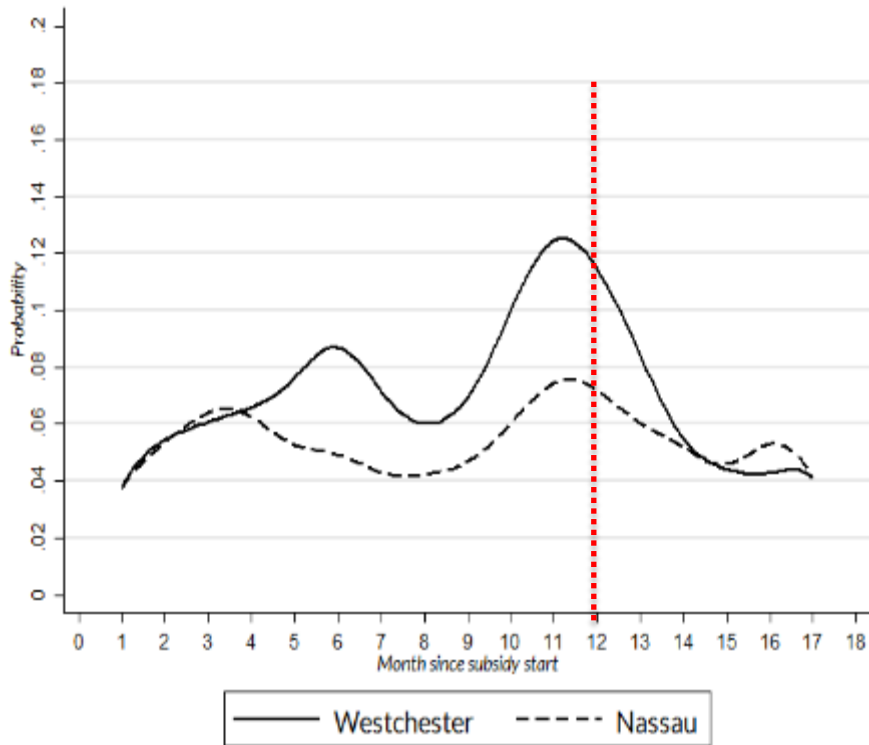
- Illinois



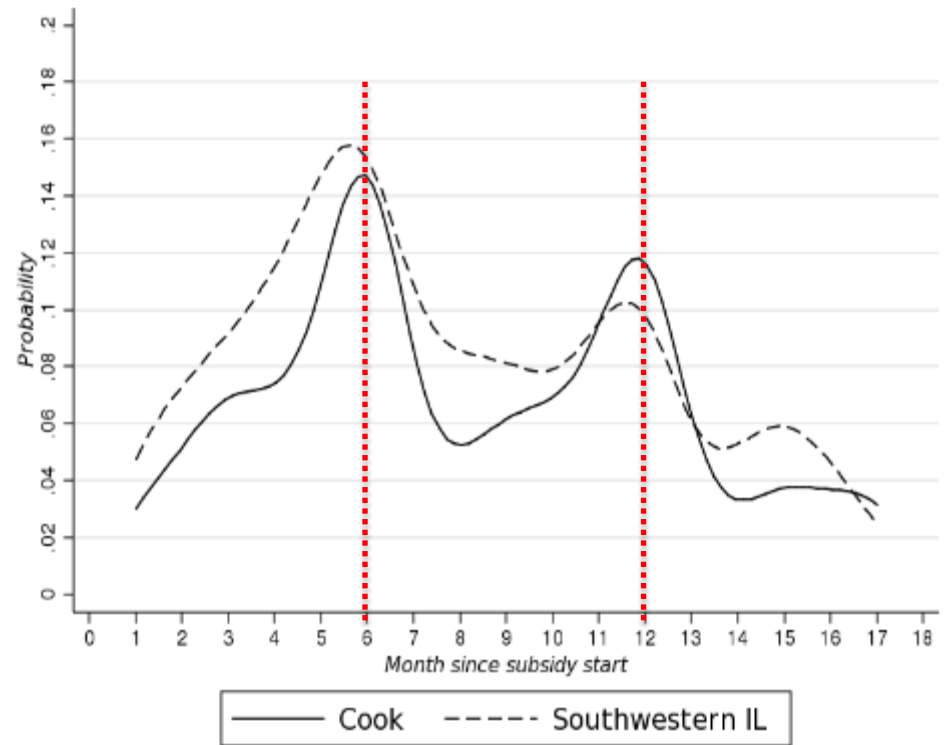
Median spell
Cook County: 9 months
Southwestern IL: 6 months

Smoothed Hazard Curve of the First Subsidy Spell, 18-month window

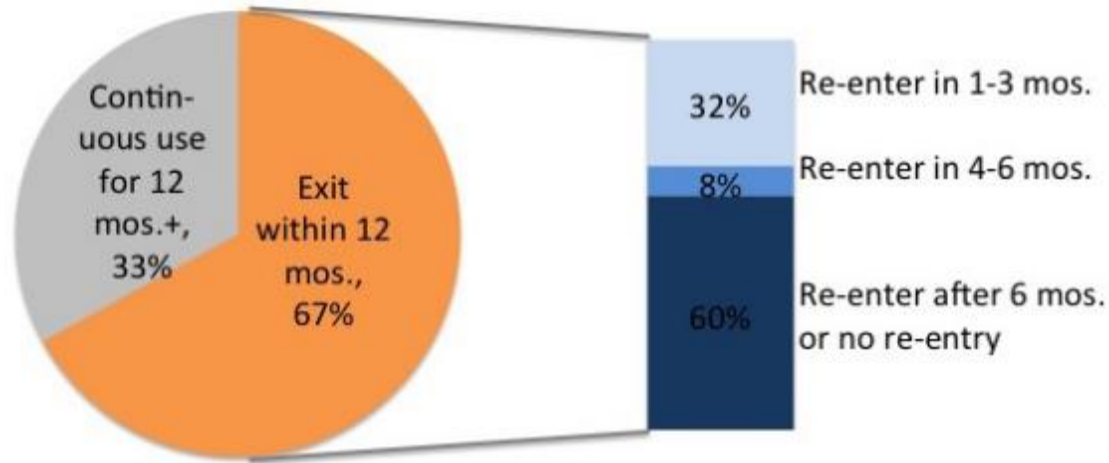
- New York



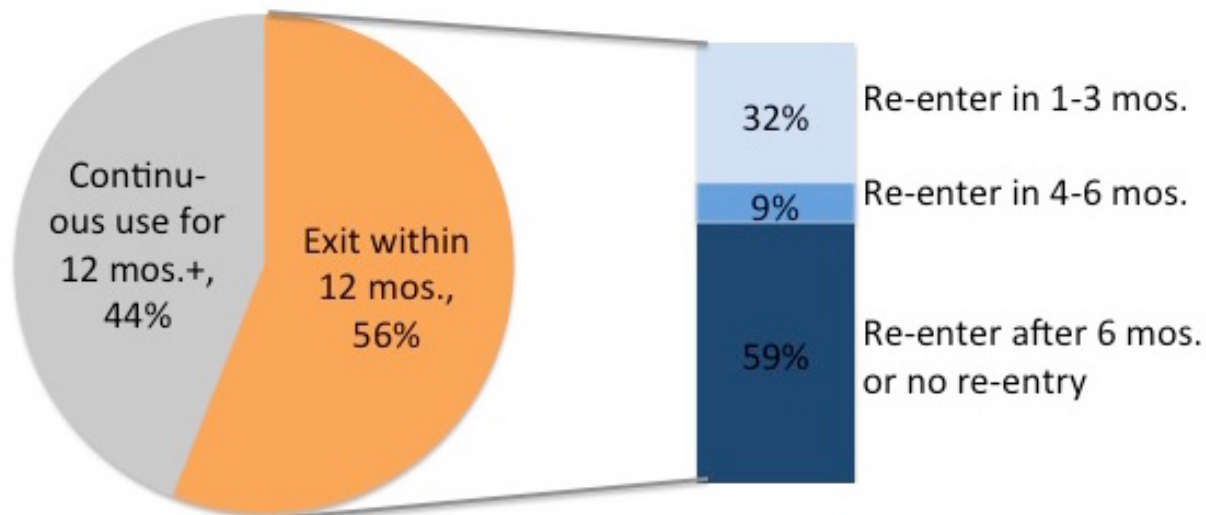
- Illinois



Illinois: Exit and Re-entry Into Subsidy Program Over 18 months (N=5893)



New York: Exit and Re-entry Into Subsidy Program Over 18 months (N=1819)



Summary

- Multi-state comparisons can be interesting and useful
- But present challenges
 - Need to create comparable measures
 - Understand local context and consult with program administrators
 - Use caution in interpreting results

It takes a lot of people to do multi-state, multi-method research

- Program Officers: Susan Jekielek; Ivelisse Martinez-Beck; Ann Rivera
- Investigators. PI: Julia Henly; Co-PI's: Amy Claessens, UC-Harris & Heather Sandstrom, Urban Institute
- State and Local Partners: Linda Saterfield, Illinois Department of Human Services; Janice Molnar, New York State Office of Children and Family Services; Maria Whelan & David Alexander, Illinois Action for Children; SuzAnne Kollman Children's Home and Aid, Southern Region; Melinda Denham, NY Office of Children and Family Services.
- Key Research Staff: Alejandra Ros Pilarz, JaeSeung Kim, Carolyn Barnes, University of Chicago; Julia Gelatt & Olivia Healy, Urban Institute

Thank you!

Alejandra Ros Pilarz

pilarz@wisc.edu



Extra Slides

Linking administrative data with additional data sources

- Admin data have advantage of telling story over time for large sample
- But story only as good as the data
- Several advantages to linking admin data to other sources
 - Surveys, qualitative interviews, participant observation, etc.

IL/NY Child Care Research Partnership: Relationship between Data Components

Phase 1

Family-level child
care payment
records

Parent
Telephone
Survey

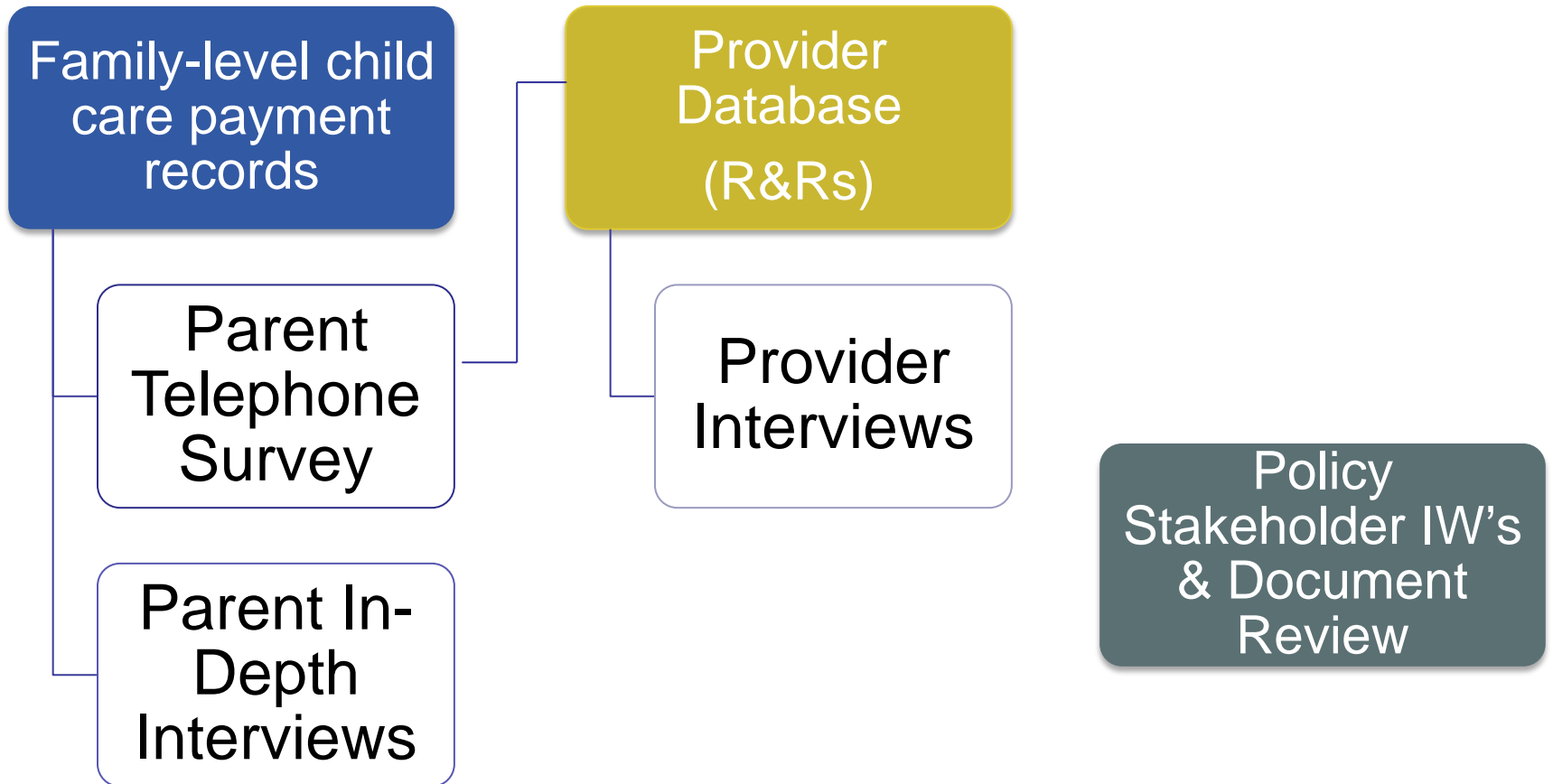
Parent In-
Depth
Interviews

Phase 2

Provider
Database
(R&Rs)

Provider
Interviews

Policy
Stakeholder IW's
& Document
Review



Continuity in Subsidized Child Care Providers over 18 months

Percentage	Illinois	New York
Number of total provider changes		
0	69.5	78.4
1	23.3	17.3
2	5.9	3.6
3 or more	1.3	0.7
Within spell change during first subsidy spell	17.3	12.5
Between spell change during first exit & re-entry (if 2+ spells)	35.8	29.9
<i>N</i>	5,092	1,819