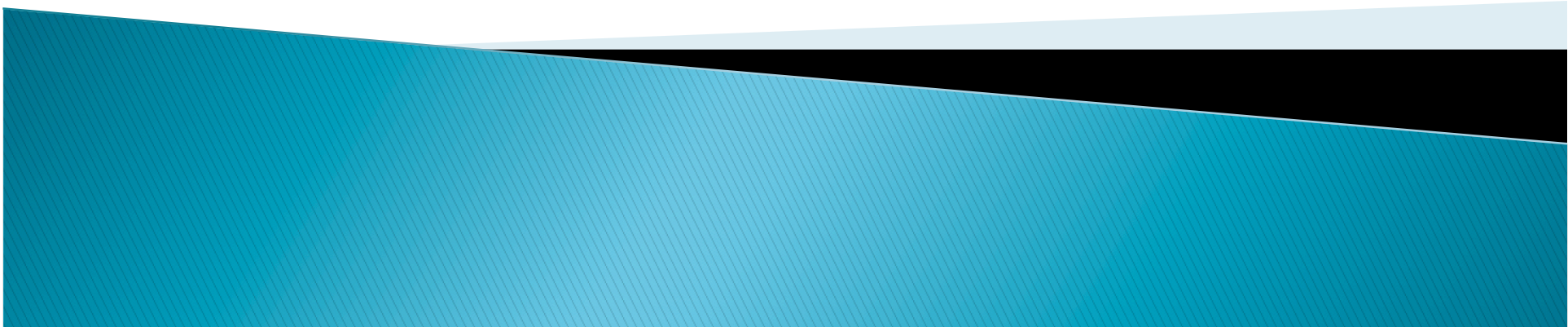


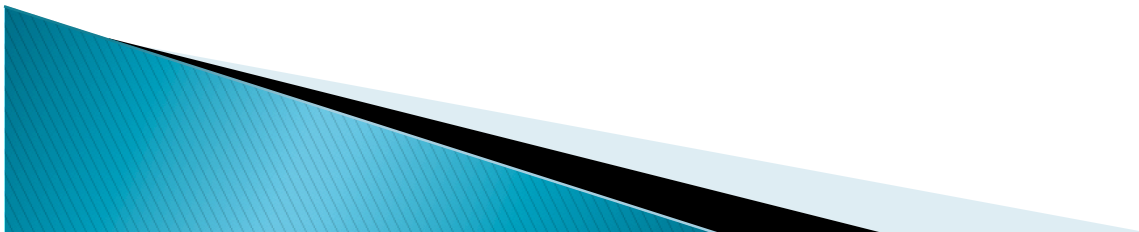
Evidence on Quality for Infants and Toddlers Emerging from National Data

Nicole Forry, Rachel Anderson,
Kate Perper, & Tamara Halle



Nationally Representative Data on Infants and Toddlers

- Few studies have provided nationally representative, comprehensive data on infants
- Among nationally representative datasets, the ECLS-B has some unique features
 - Oversamples
 - Observed quality measures and child assessments
 - Longitudinal



What is the ECLS-B?

- Data collected by the National Center for Education Statistics
- Nationally representative sample of approximately 11,000 children born in 2001
- Topics covered:
 - Family characteristics including family poverty status, family structure, maternal work status and schedule, maternal education
 - Children's developmental outcomes (cognitive, social, emotional, and physical)
 - Child care characteristics, including observational quality measures for a subset of children



Characteristics of a Nationally Representative Sample of Infants

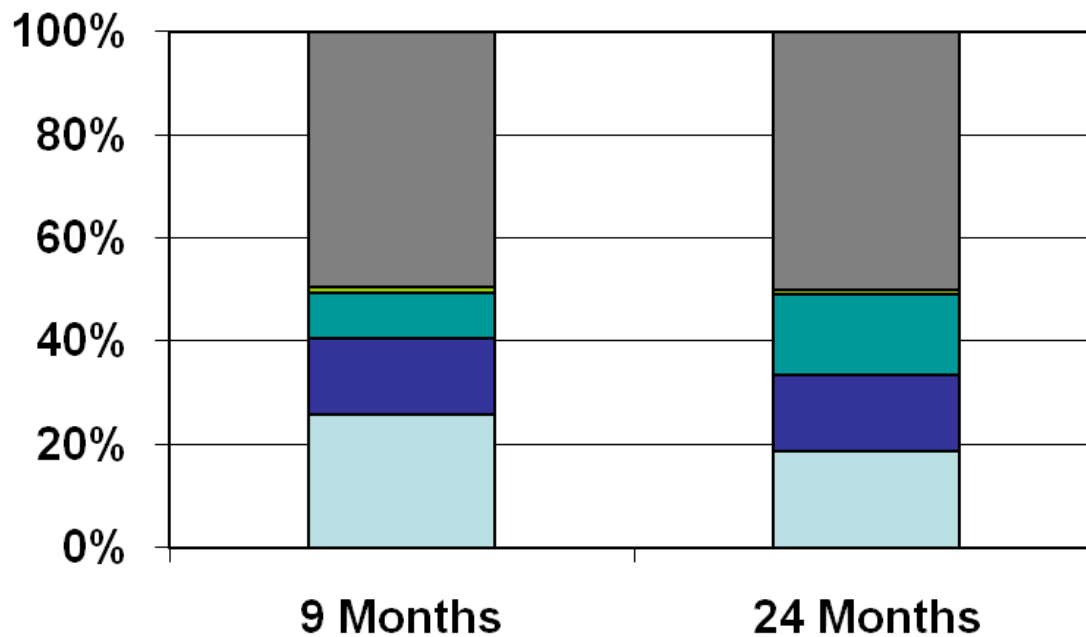
Gender	51% male 49% female
Race/Ethnicity	54% White 14% Black 26% Hispanic 3% Asian/Pacific Islander 1% American Indian 4% multiracial
Non-English as Primary Home Language	19%
Below 100% Poverty	23%
Subsidy Receipt	9%

Source: Flanagan & West (2004), original analysis



Child Care Arrangements of All Infants and Toddlers

Percent of Infants and Toddlers by Primary Care Type at 9 and 24 Months

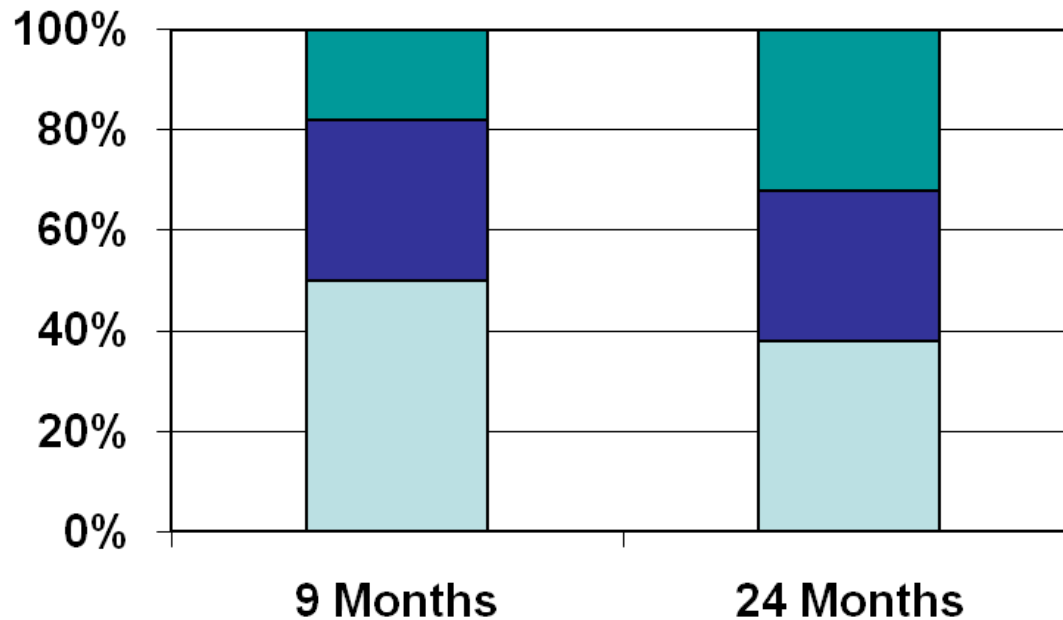


- Relative care
- Center-based care
- No child care
- Nonrelative care
- Multiple arrangements

Source: Flanagan & West (2004), Mulligan & Flanagan (2006)

Child Care Arrangements of Infants and Toddlers in Non-Parental Care

Percent of Infants and Toddlers in Child Care by Primary Care Type at 9 and 24 Months



Relative care Nonrelative care Center-based care

Source: Flanagan & West (2004), Mulligan & Flanagan (2006)

Quality of Care Used by a Nationally Representative Sample of Toddlers

	N	Mean	Max Possible
FDCRS Total Score	800	3.5	7
ITERS Total Score	600	4.2	7
Arnett Total Score	1400	61.4	78

Analyses conducted on the full subsample of children for whom there is quality observation data; Ns are rounded to the nearest 50.

Quality of Care Used by 24-Month- Olds by Poverty Status

	Poor		Non-Poor		
	N	Mean	N	Mean	
FDCRS Total Score	150	2.79	650	3.63	***
ITERS Total Score	100	4.16	500	4.26	
Arnett Total Score	300	58.39	1,100	62.17	***

Analyses conducted on the full subsample of children for whom there is quality observation data; Ns are rounded to the nearest 50.

Recent Child Trends Publications Based on ECLS–B Data

- **Primary Child Care Arrangements of U.S. Infants: Patterns of Utilization by Poverty Status, Family Structure, Maternal Work Status, Maternal Work Schedule, and Child Care Assistance**
- **Associations between Provider Training and Education and Other Quality Indicators in Low–Income Children’s Primary Care Arrangements at 24 Months of Age**
- **Disparities in Early Learning and Development: Lessons from the Early Childhood Longitudinal Study– Birth Cohort (ECLS–B)**

