



Integration of QRIS and State Professional Development Systems

Sarah LeMoine

National Association for the Education of Young Children

Levels and Integration of Standards

QUALITY



REDUCING THE RISK OF HARM

Draft PD Definition

Early childhood education *professional development* (PD) is a continuum of learning and support activities designed to prepare individuals for work with and on behalf of young children and their families, as well as ongoing experiences to enhance this work. These opportunities lead to improvements in the knowledge, skills, practices, and dispositions of early education professionals.



Source: DRAFT *Defining the Work of Early Childhood Education Professional Development Specialists*. © 2010 National Association for the Education of Young Children and National Association of Child Care Resource and Referral Agencies. All Rights Reserved.

Integrated State PD System

- System of comprehensive preparation and ongoing development and support
- Crosses sectors (e.g., child care, Head Start, early intervention and special education, and public schools)
- Serves professionals preparing to and working with and on behalf of young children and their families (i.e., direct and non-direct service staff)

NAEYC State Policy Blueprint: Principles for Policy-Making

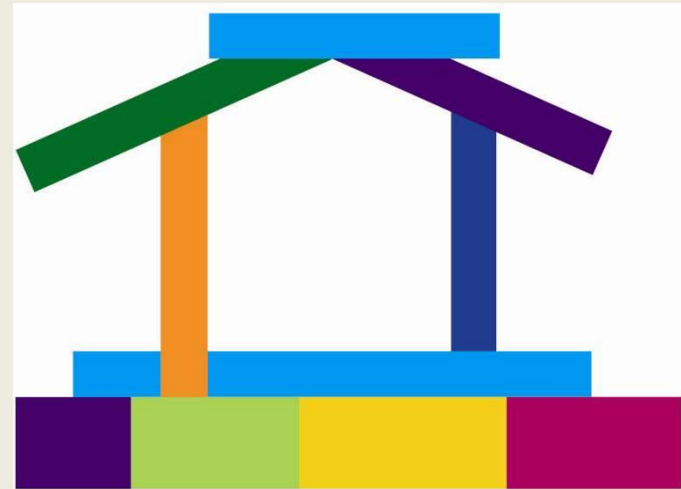
- Integration
- Quality assurance
- Diversity, inclusion, and access
- Compensation parity



© Wagner/NAEYC

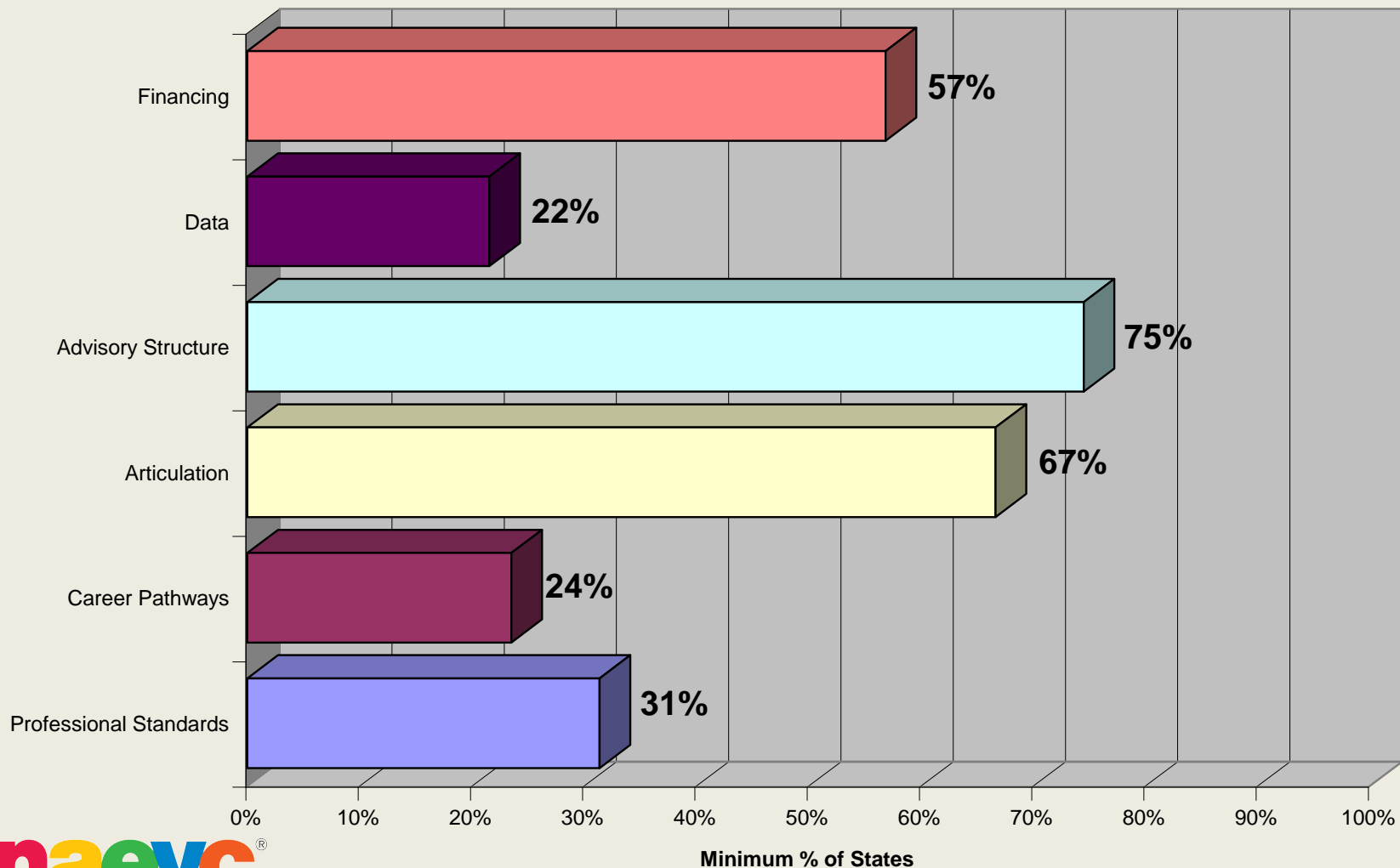
NAEYC State Policy Blueprint: Essential Policy Areas

- Professional Standards
- Career Pathways
- Articulation
- Advisory Structure
- Data
- Financing

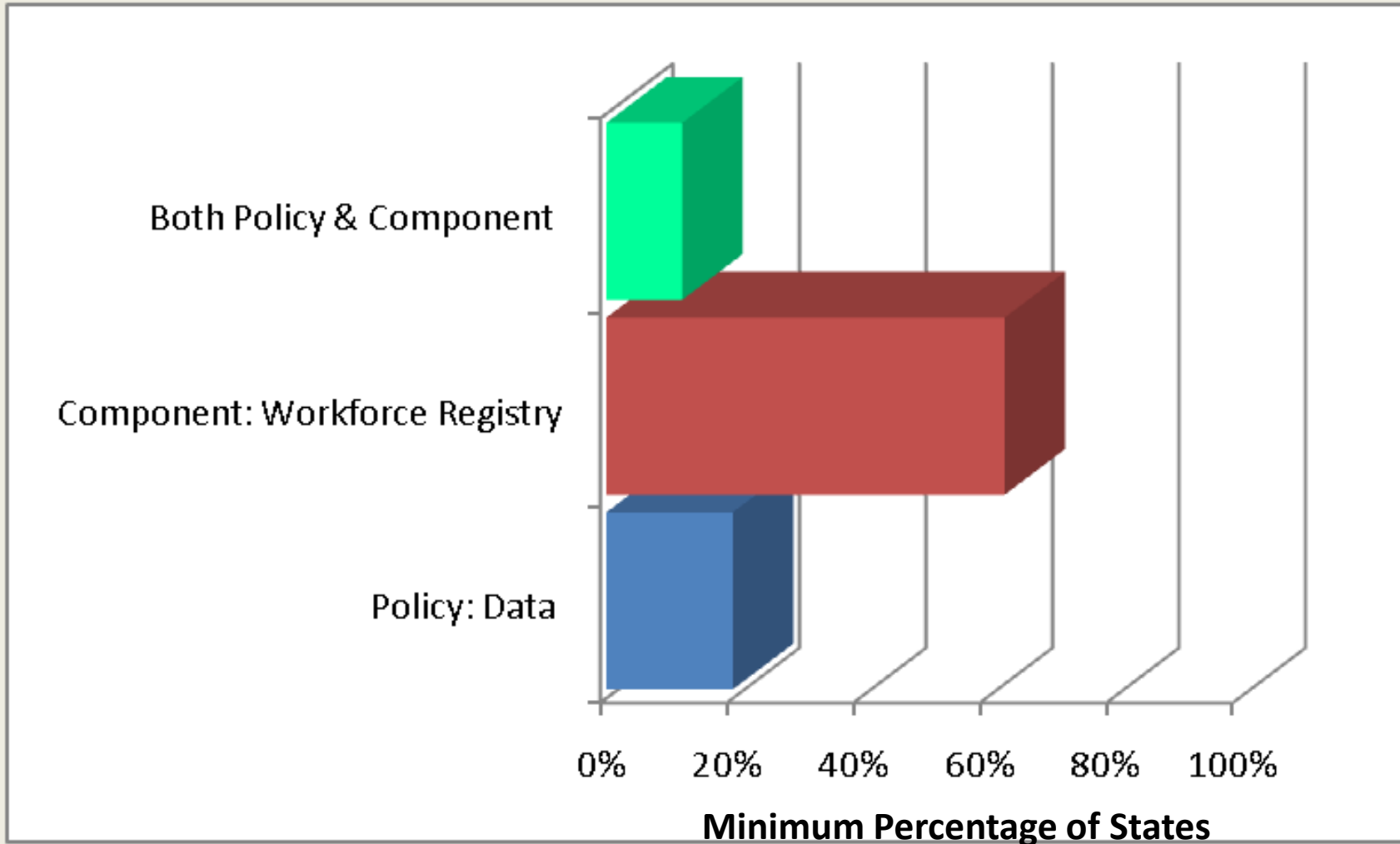


Snapshot of State Policies

States that Address Blueprint Essential Policy Areas in Statutes, Regulations, or Executive Orders



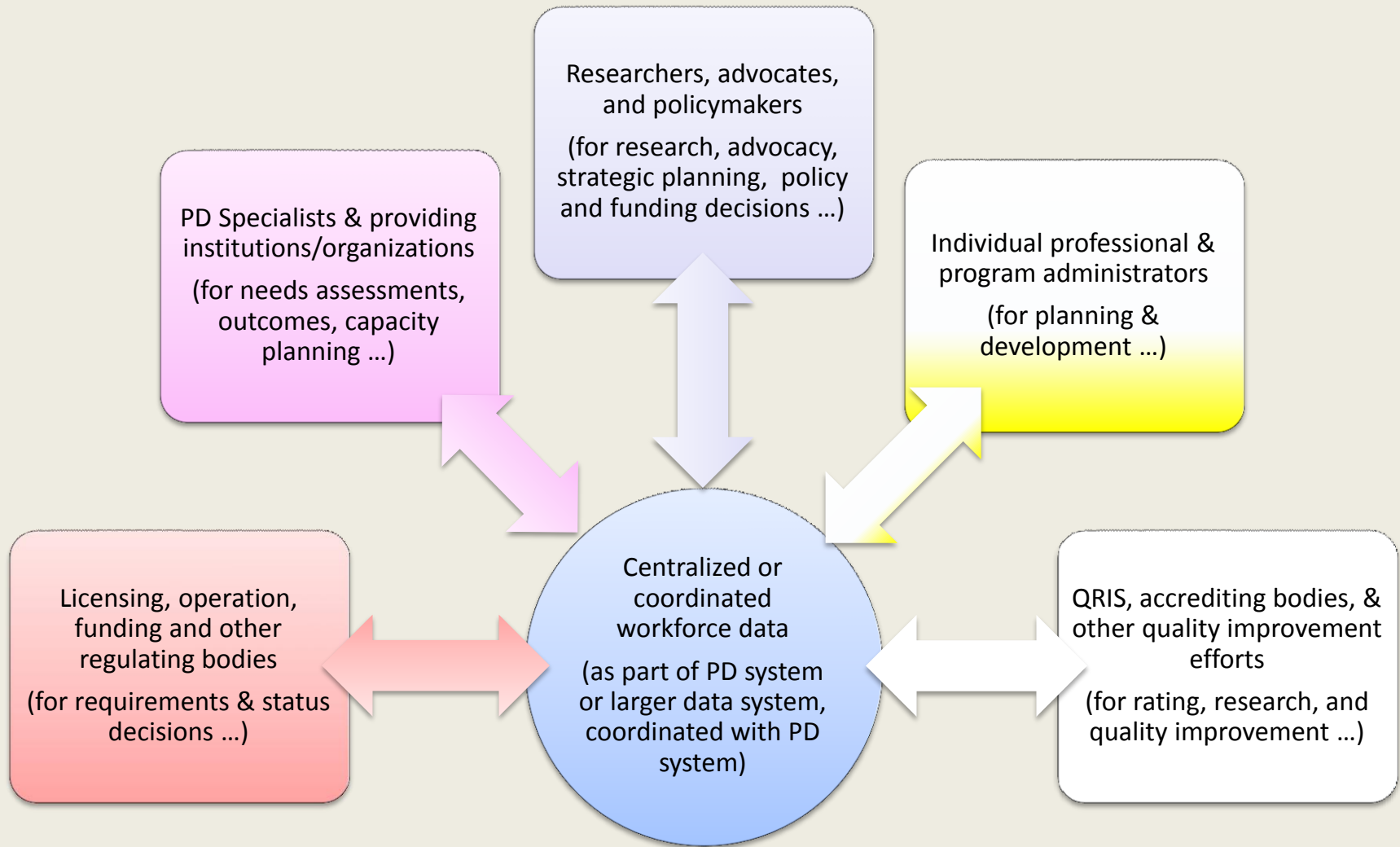
Focus on Data: Central Challenge



Policy = States that Address Blueprint Essential Policy Areas of Data in Statutes, Regulations, or Executive Orders

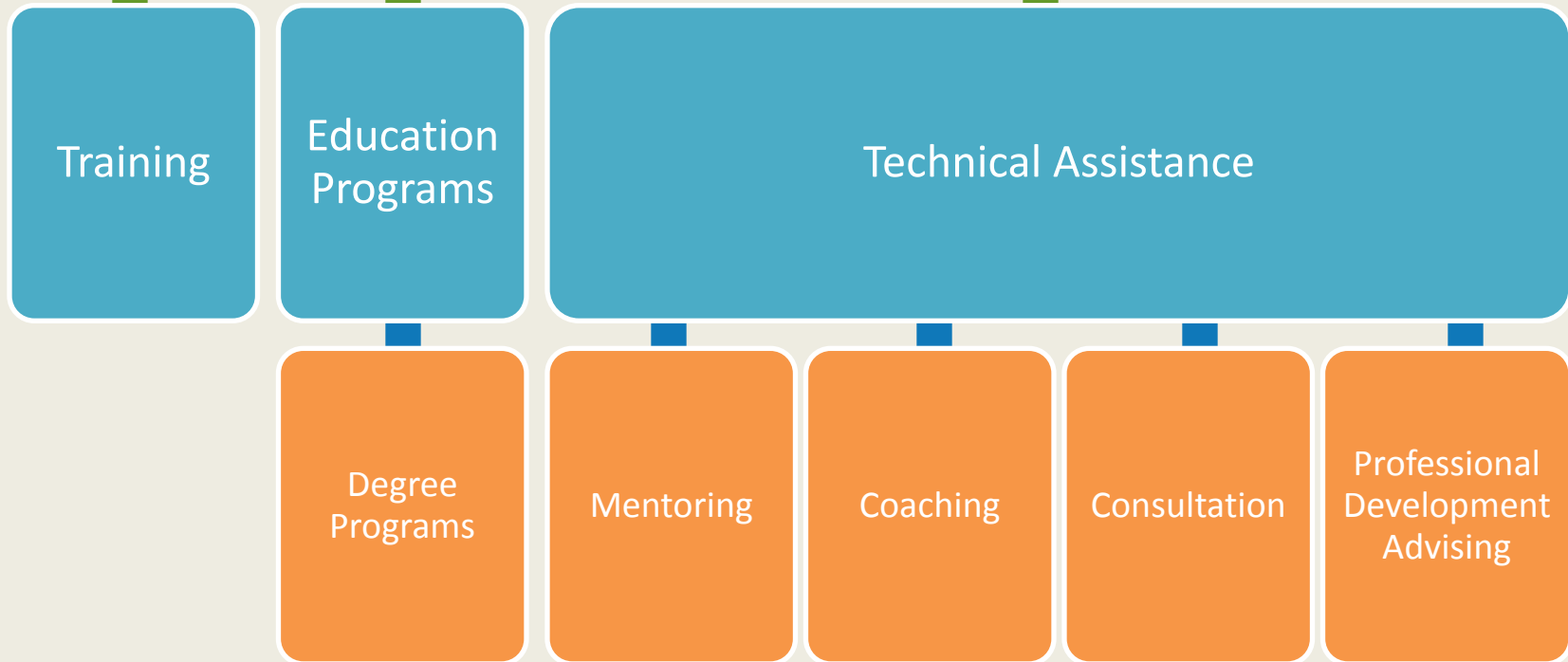
*n=51; Data as of August 2009

Maximizing Workforce Data



Defining the Work of PD Specialists

Professional Development



Related Resources and Assistance

www.naeyc.org/policy/ecwsi

- Online state policy database
- Summary, planning guide, and additional tools
- Collaborative consultation via annual summit, web seminars, and peer-to-peer activities
- Linkages to additional NAEYC state and Federal policy work and professional development activities including *Conceptual Framework for Professional Development* and Professional Preparation Standards

NAEYC's Early Childhood Workforce Systems Initiative (ECWSI) is generously supported by the Birth to Five Policy Alliance and the McCormick Foundation

Thank you!



naeyc[®]

National Association of the Education of Young Children

1313 L Street, NW, Suite 500

Washington, DC 20005

www.naeyc.org

800-424-2460